

Child Well-Being in Rutherford County

Tennessee Commission on Children and Youth

Richard Kennedy, Executive Director

Kylie Graves, Policy Specialist



TENNESSEE COMMISSION ON
CHILDREN & YOUTH

Overview

- About Tennessee Commission on Children & Youth
- State of the Child Data
- Rutherford County Data
- Recommendations



TENNESSEE COMMISSION ON
CHILDREN & YOUTH

- Independent state agency
- 21 commission members appointed by the Governor
- Mission: We lead systems improvement for all children and families through data-driven advocacy, education, and collaboration
- Vision: We strive to become the premier leader in children and youth systems improvement through innovative and transformative approaches and practices.



THE ANNIE E. CASEY FOUNDATION

- KIDS COUNT, a project of the Annie E. Casey foundation, is an effort to provide state legislators, public officials and child advocates with reliable data, policy recommendations and tools needed to advance sound policies that benefit children and families.
- The Tennessee Commission on Children and Youth is the Tennessee KIDS COUNT affiliate, providing county-level data to the KIDS COUNT Data Center, promoting KIDS COUNT data publications, annually publishing KIDS COUNT: The State of the Child in Tennessee and County Profiles

Topics Addressed in 2021 State of the Child

- **Demographics**
- **Special Topics**
- **Economics**
- **Education**
- **Health**
- **Child Welfare & Youth Justice**

- COVID-19
- ACEs
- Youth & Young Adults
- Poverty
- Housing
- Education Outcomes
- Support Services
- Early Childhood Education
- Food & Nutrition
- Mental Health
- Substance Use
- Overall Health
- Access to Health Care
- Maternal Mortality
- Maternal & Infant Care
- Dental Care
- Child Welfare
- Domestic Violence
- Human Trafficking
- Youth Transitions
- Suspension & Expulsion
- Youth Justice



2021 Data Challenges

Due to the COVID-19 pandemic, the Census Bureau and other data sources have experienced unprecedented challenges in data collection. The release of some of the typical indicators used in the State of the Child has been delayed until March 2022.

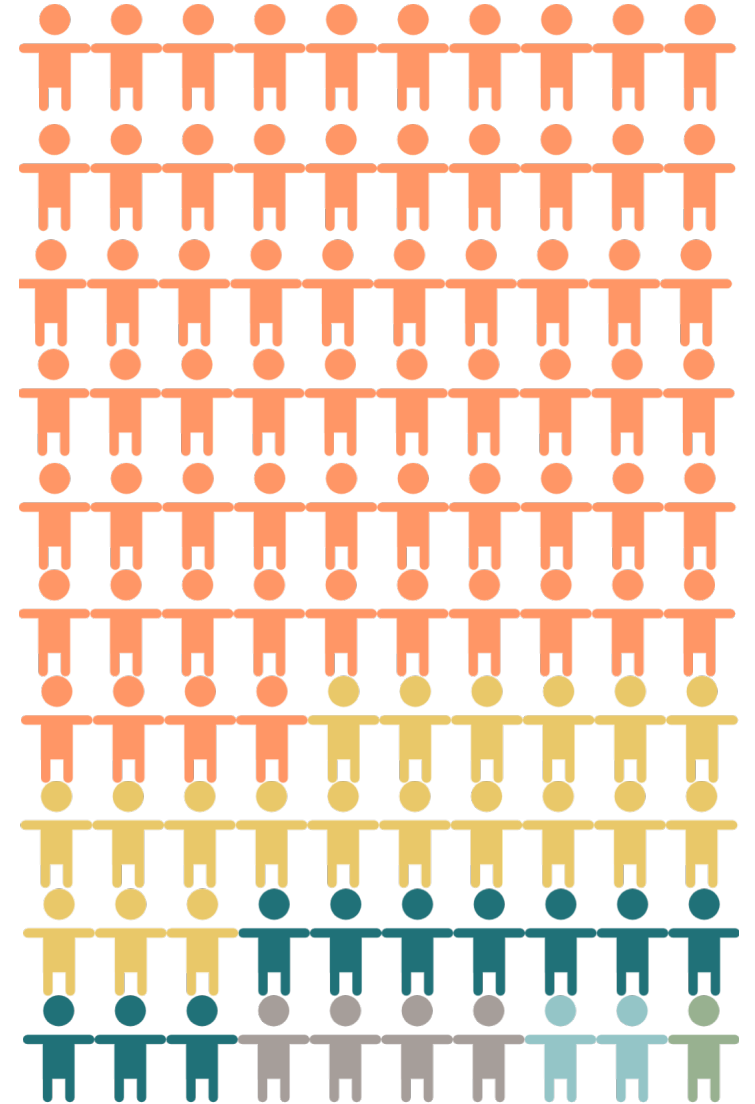
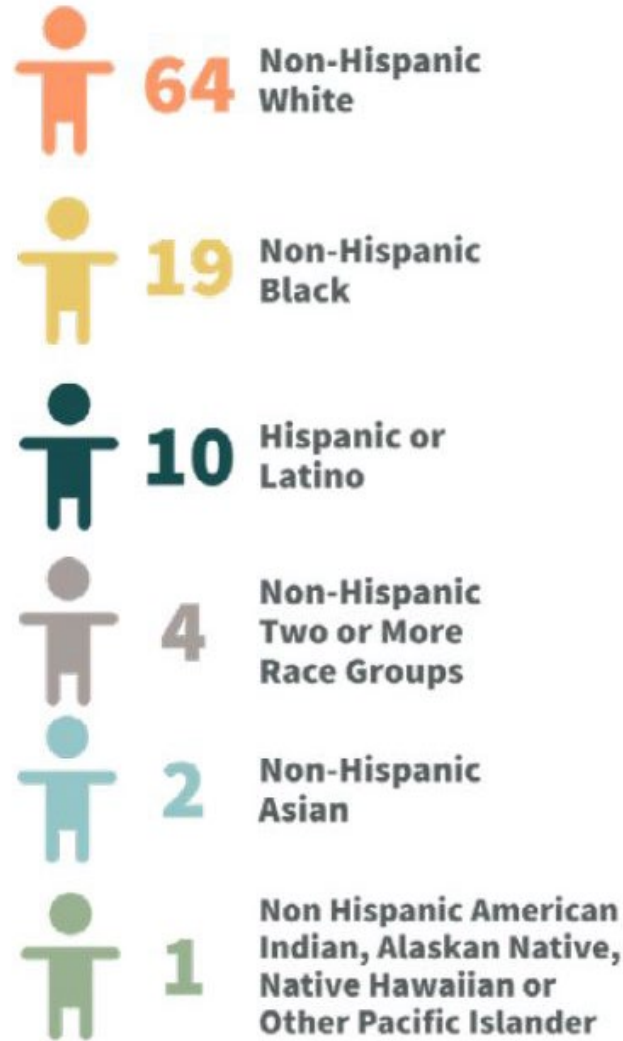
We have compiled data from many community and national partners, and the majority of the data in this book spans 2019-2021. Unfortunately, due to the lower sample sizes, sometimes data could not be broken out by race or ethnicity.



Demographics

As Tennessee's children become increasingly diverse, equitable access to **economic opportunities**, **education**, **health care**, and **justice** must remain at the center of our systems, policies and programs.

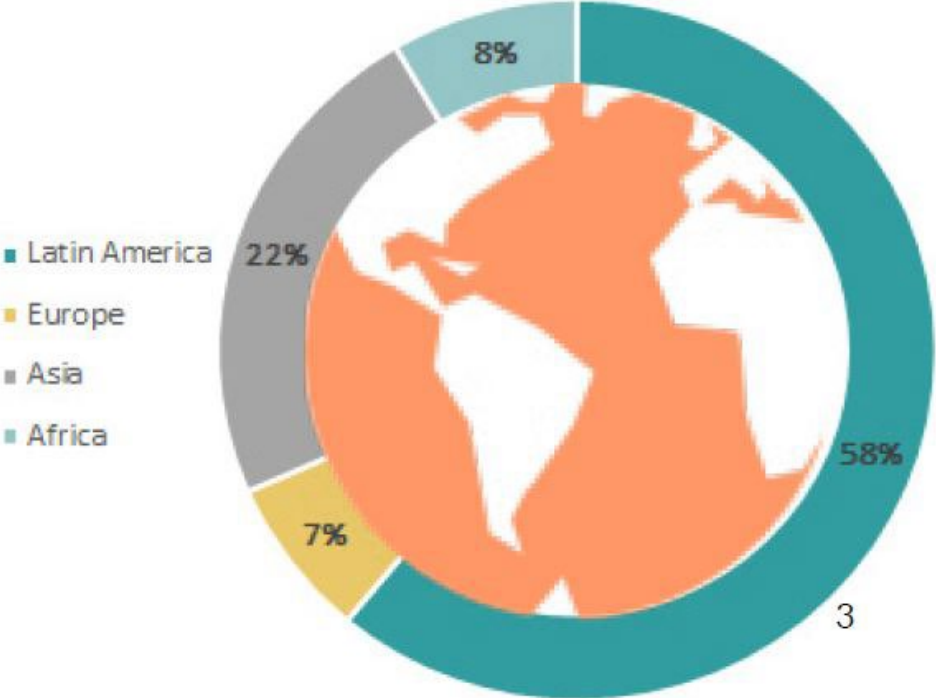
Out of 100 Tennessee Children



Demographics

1 IN 8

Tennessee children are a part of an immigrant family.²



1 IN 10

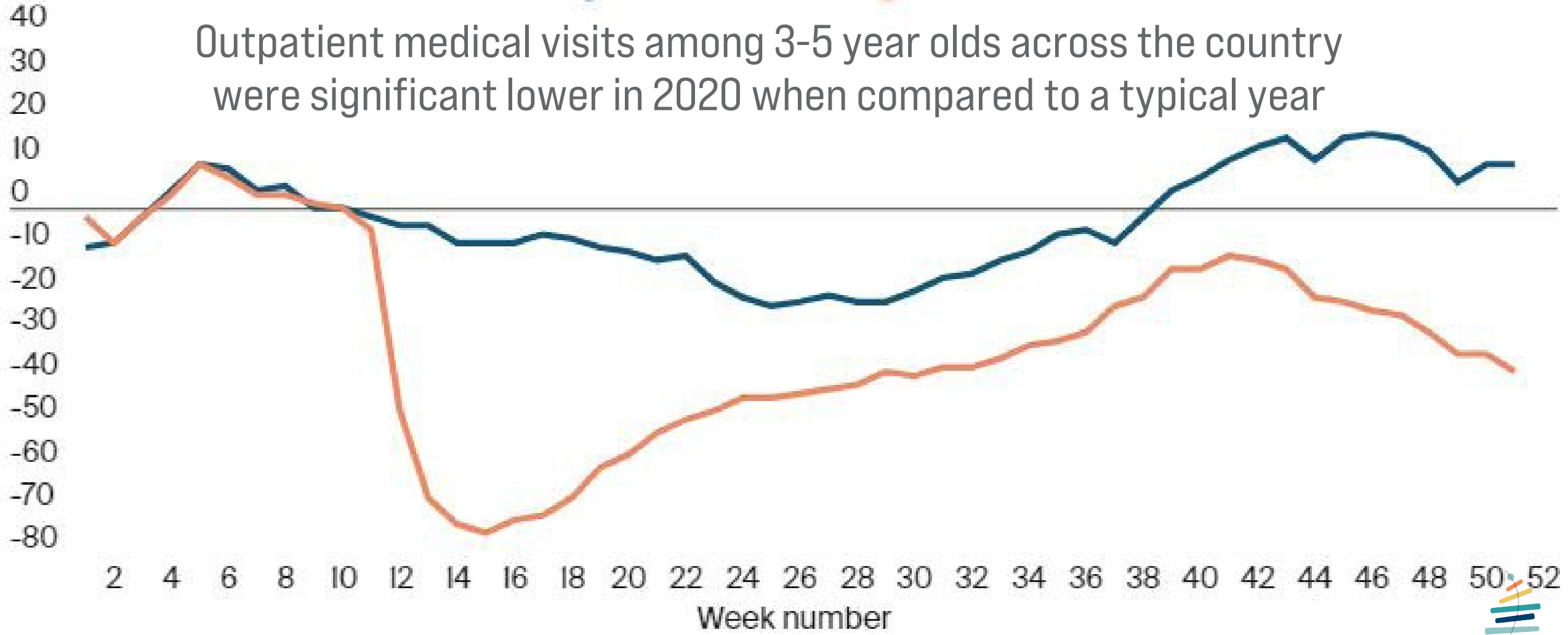
Tennessee school age children speak a language other than English at home.



Special Topics

● Typical-year trend ● 2020

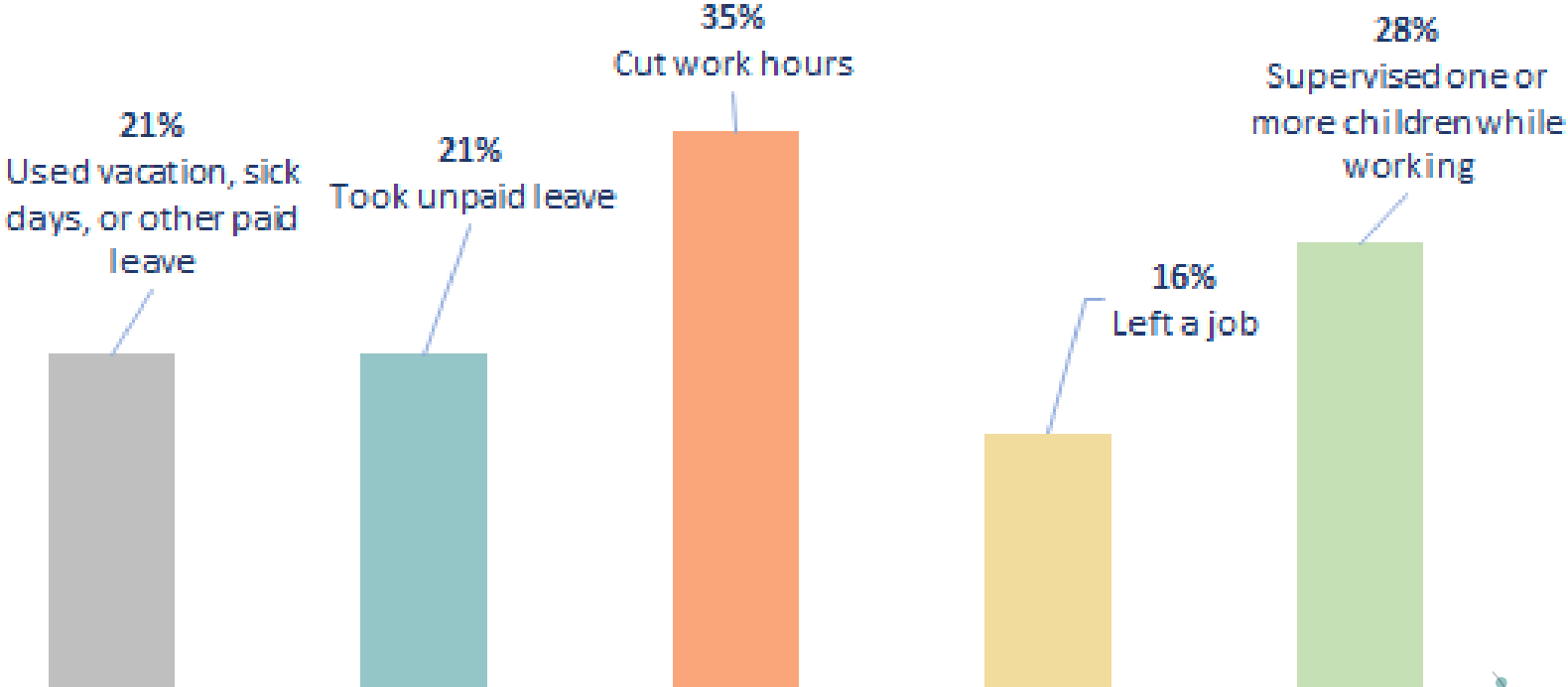
Outpatient medical visits among 3-5 year olds across the country were significant lower in 2020 when compared to a typical year



Special Topics



OVER HALF OF PARENTS WHO EXPERIENCED CHILDCARE DISRUPTIONS TOOK UNPAID LEAVE AND/OR CUT THEIR WORK HOURS.⁶



In September 2021, 42 percent of Tennessee households with children had difficulty paying for usual household expenses; a 12 percent increase from September 2020.⁶

Nearly half of all Tennessee families are struggling financially.

In 2019, one in four Tennessee families were receiving financial assistance to provide for their children.





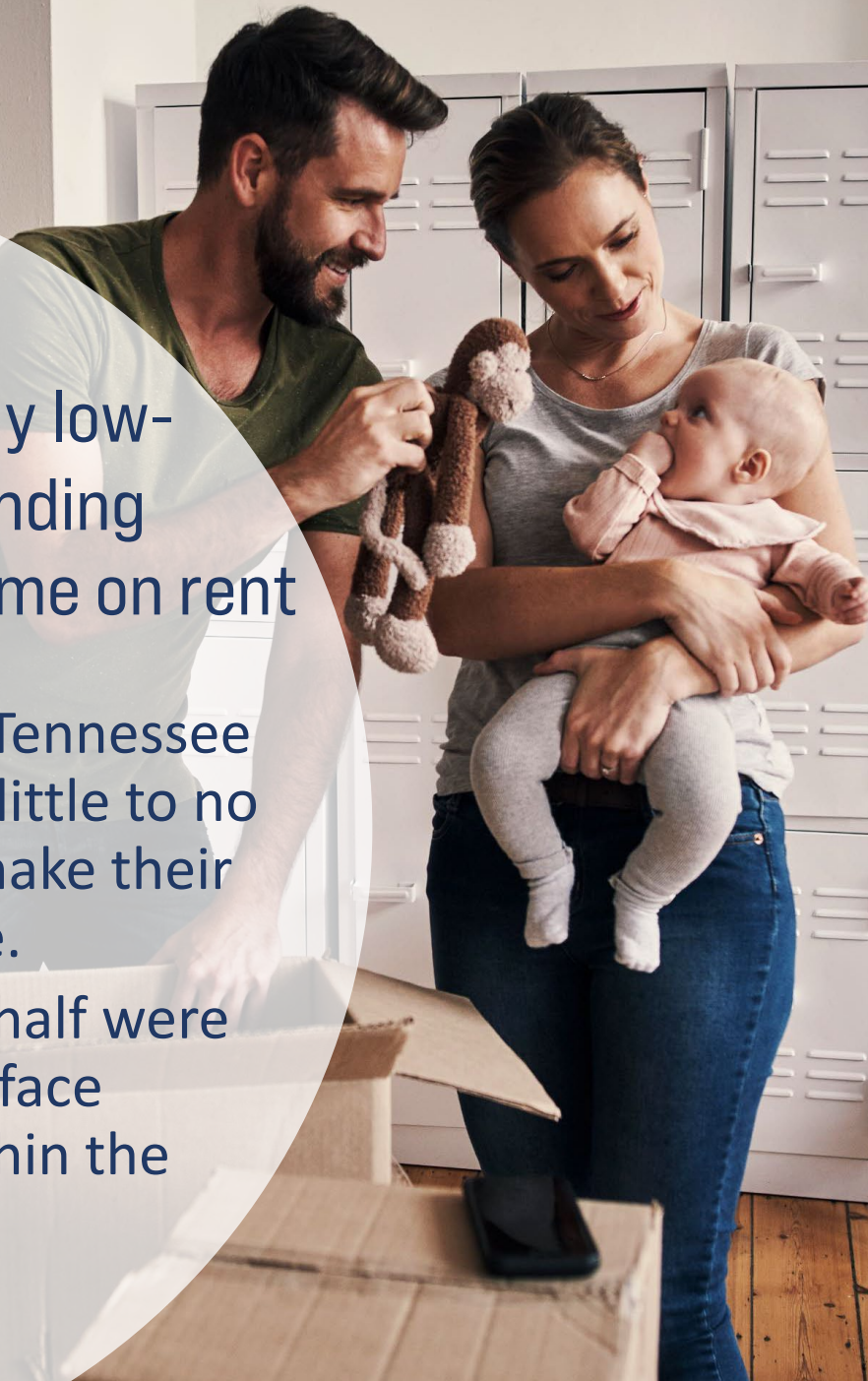
In October, the Child Tax Credit helped financially support more than 700,000 Tennessee families and ensure over 1 million children in Tennessee had their basic needs met.



Housing

143,560 Tennessee extremely low-income households are spending more than half of their income on rent

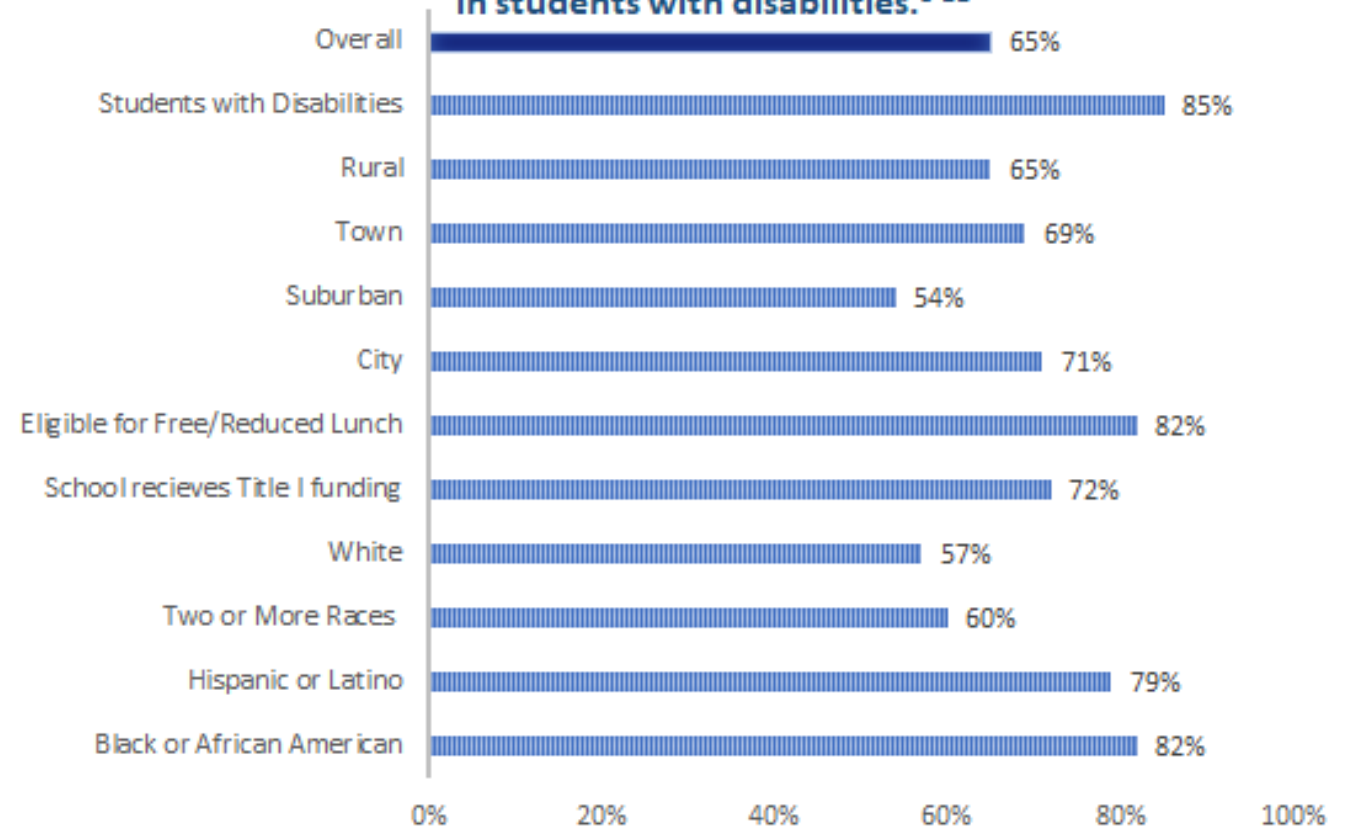
- In August of 2021, one in five Tennessee households with children had little to no confidence in their ability to make their next housing payment on time.
 - Of those households over half were very or extremely likely to face eviction or foreclosure within the next two months.



2020-2021 TNREADY TESTING AMONG 3RD - 5TH GRADERS SHOWED:

- **One in four** students scored on-track or mastered in **Math**.
- **One in three** students scored on-track or mastered in **Reading and Language**.
- **Two in five** students scored on-track or mastered in **Science**.

Overall, 65% of Tennessee 4th grade students rated below proficient in reading. **Geographic, economic, and racial disparities persist with the largest disparity in students with disabilities.**⁶⁻¹¹





In the 2020-2021 school year:

One in four districts met the goal of one certified social worker for every 1,500 students.

A little over one in three districts met the goal of one certified psychologist for every 1,000 students.



Infant/Early Child Care

Accessible

- 48 percent of Tennesseans live in a childcare desert.
- 62 percent in rural areas.

Affordable

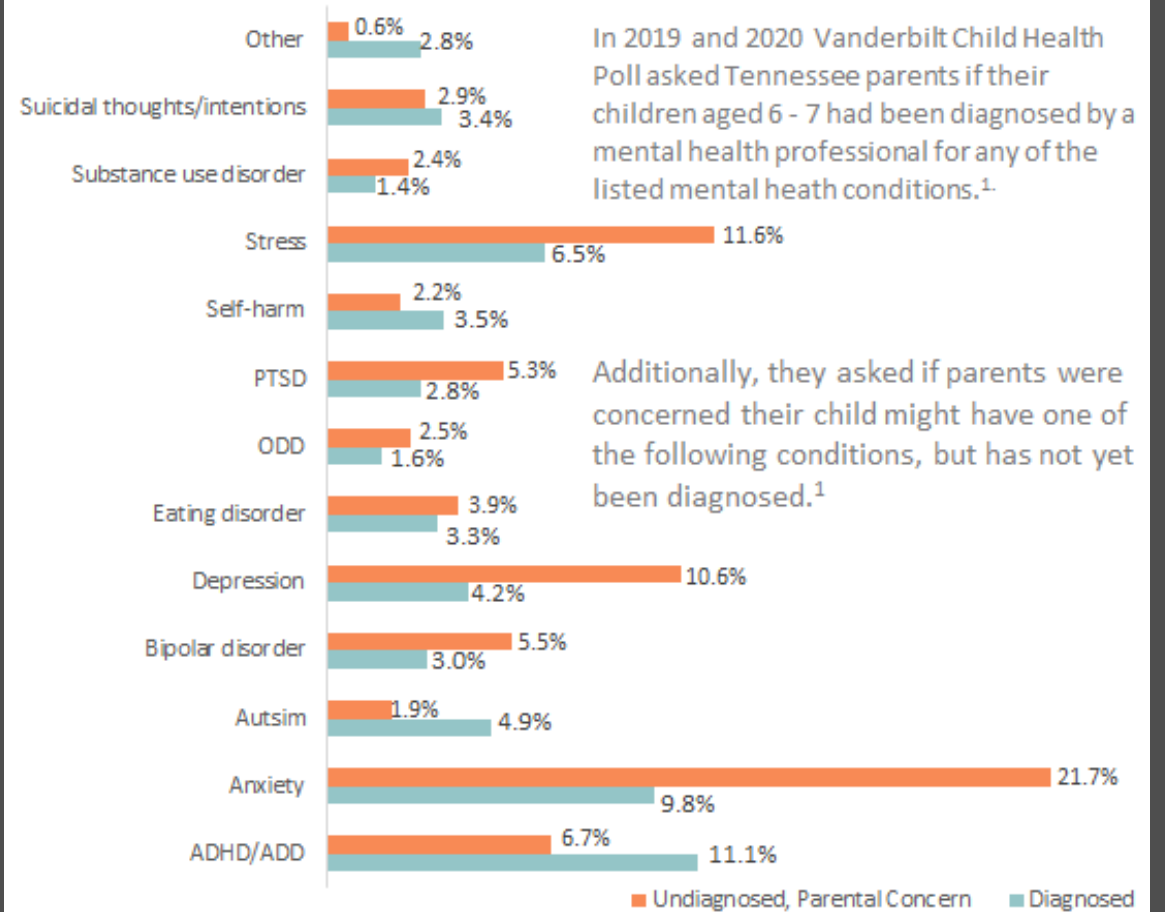
- Infant care in Tennessee costs more than in-state public university tuition.

High-Quality

- One in three childcare providers in Tennessee are licensed.
- One percent of those licensed have national accreditation.



MENTAL HEALTH AMERICA'S RANKING THE STATES 2022



Although already on the rise, the pandemic has exacerbated mental health concerns among Tennessee youth.



One in seven Tennessee parents reported their child had been diagnosed with anxiety in 2021. A 42 percent increase from one in 10 reported in 2019.

According to the new data, in 2021:

- **more than a third (37%) of high school students reported they experienced poor mental health during the COVID-19 pandemic**
- **44% reported they persistently felt sad or hopeless during the past year.**

Youth who felt connected to adults and peers at school were significantly less likely than those who did not to report

- persistent feelings of sadness or hopelessness (35% vs. 53%);
- that they seriously considered attempting suicide (14% vs. 26%);
- or attempted suicide (6% vs. 12%)

However, fewer than half (47%) of youth reported feeling close to people at school during the pandemic.



A survey of Tennessee high school students showed

ONE IN FIVE

seriously considered suicide

ONE IN SEVEN

made a plan about how they would attempt suicide

ONE IN 10

actually attempted suicide

ONE IN 25

had a suicide attempt result in an injury, poisoning, or overdose that had to be treated by a doctor or nurse in the 12 months preceding the survey

The number of teens who made a plan about how they would attempt suicide has **increased by 50 percent** since 2007.



Although teen substance use is on the decline and lower than the national average, there is an alarming increase in fatal overdoses.

- Fentanyl was involved 80 percent of overdoses among Tennesseans 15-24.
 - Since 2017 the number of youth and young adult overdoses from Fentanyl has increased by 230 percent.

15 percent

of Tennessee high schoolers had ridden in a car within the last month were the driver had been drinking alcohol.



- Half of Tennessee's youth are insured through TennCare.
- 80 percent of uninsured Tennesseans reported being uninsured because they could not afford insurance





- In fall 2020, a Vanderbilt Child Health Poll found that the percent of uninsured children in Tennessee had more than doubled, from 4 percent in 2019 to 9 percent.
- In 2019, over 53,000 Tennessee children remained uninsured even though they were eligible for CoverKids or TennCare
- In fall 2020, 1 in 5 parents in these programs reported a loss of coverage over the last two years, with more than a third of those attributing the loss to a paperwork issue.
- 12-month continuous eligibility.

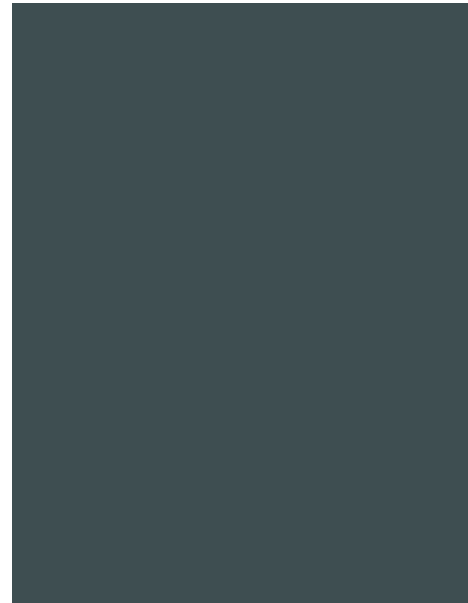




Infant & Maternal Care

- In 2019, 9.2 percent of babies in Tennessee were born at a low birth weight.
- COVID-19 and pregnancy
- Both the rate of pregnancy and births among girls age 15-17 has been cut in half over the last decade.





Maternal Mortality

- The number of deaths decreased from 82 in 2018 to 62 in 2019.
- In 2019, 37 percent of all cases of maternal mortality were pregnancy-related and 53 percent were pregnancy-associated not related.
- The leading cause of pregnancy-related deaths was cardiovascular or coronary conditions.
- For pregnancy-associated deaths, acute overdose was the leading cause of death.
 - One in six pregnancy-associated deaths were classified as intentional and violent, with three of five of those involving a firearm.





- Of all pregnancy-associated deaths, more than two out of three were covered by TennCare after birth.
- 61 percent of deaths occurred 1.5-12 months after death.
- Previously, TennCare coverage for pregnant women expired 60 days after birth.
 - The Pregnancy-Associated Mortality Ratio for a woman on TennCare was 2.5 times higher than those on private insurance.
- A new pilot program has extended TennCare benefits to 12 months. As this program is implemented we hope to see a reduction in pregnancy-associated deaths as 79 percent of these deaths were found to be preventable.





Disparities in Maternal Mortality

- In Tennessee, Black women are at an increased risk of health complications associated with pregnancy.
- In 2019, they comprised 32 percent of all pregnancy-associated deaths.
- The disparity increases when looking at pregnancy-related deaths.
- In 2017-2019 there were 17.7 non-Hispanic white deaths per 100,000 births compared to 69.4 non-Hispanic Black women.
- Black women in Tennessee are 4 times more likely to die from a pregnancy related cause than white women.



In 2019, Tennessee had the highest rate of foster care instability in the nation

In FY2020 Tennessee had:
**138,747 Tennessee Child Abuse
Hotline calls.**¹

**77,238 CPS investigation and
assessment hotline cases.**¹

In 2020 Tennessee had
**6,916 substantiated cases of child
abuse or neglect.**²



Domestic Violence

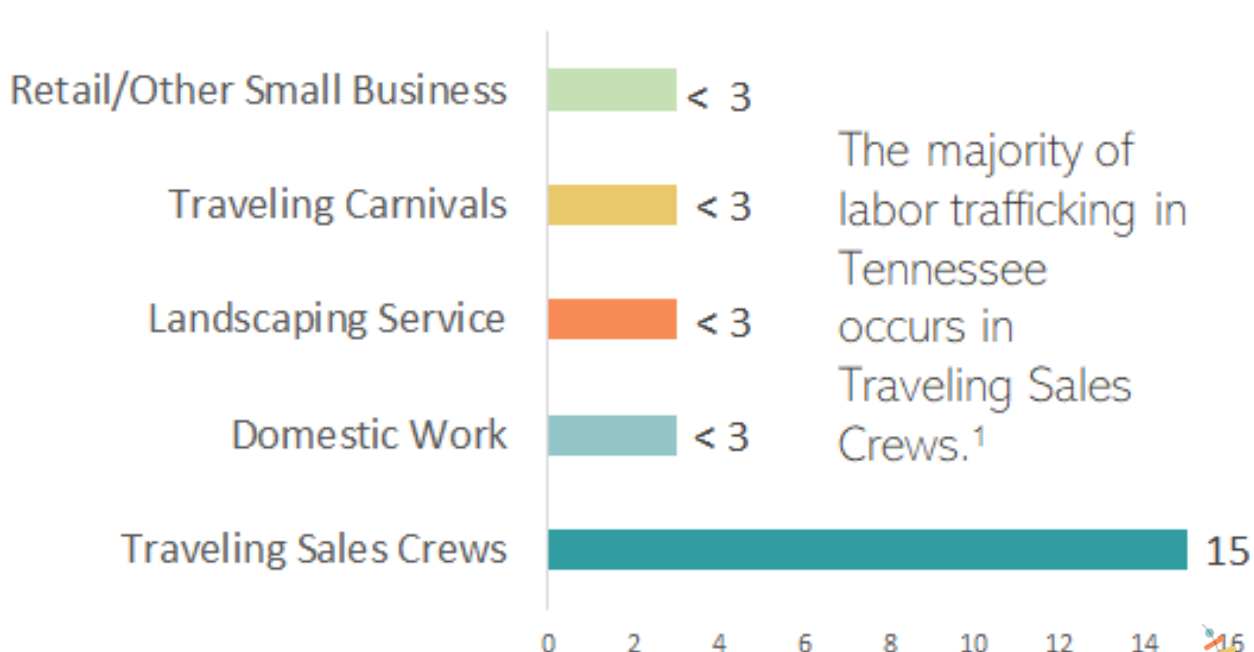
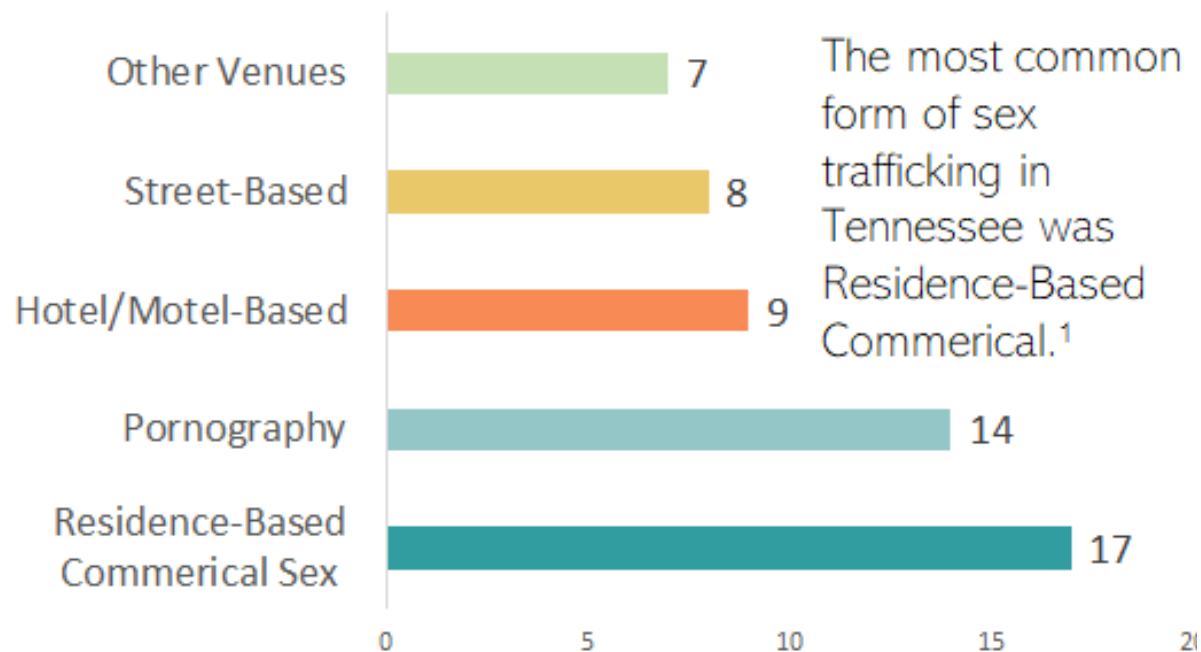
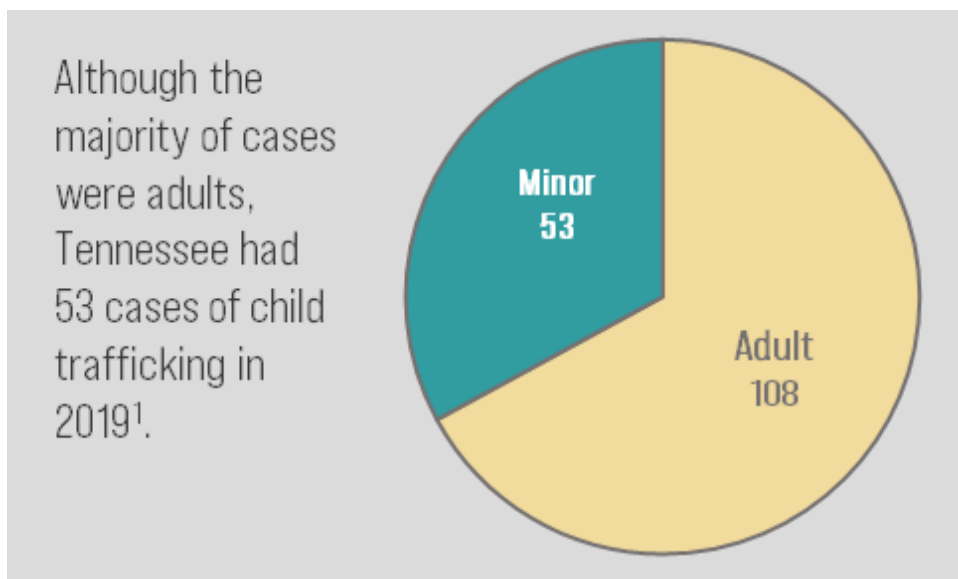
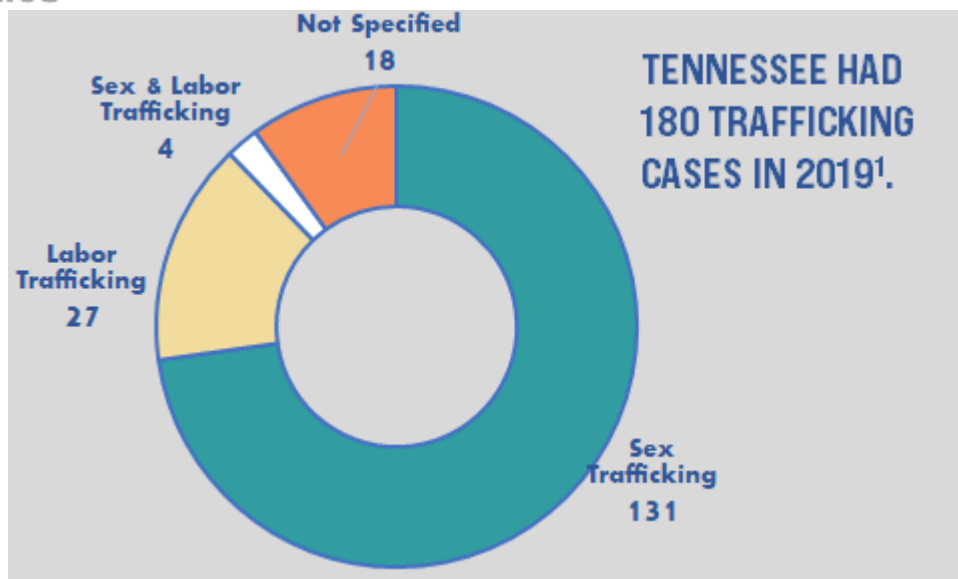


More than one in six Tennessee high school girls reported experiencing physical dating violence in the last year.

That is significantly higher than anywhere else in the nation and twice as high as the national rate.



Human Trafficking

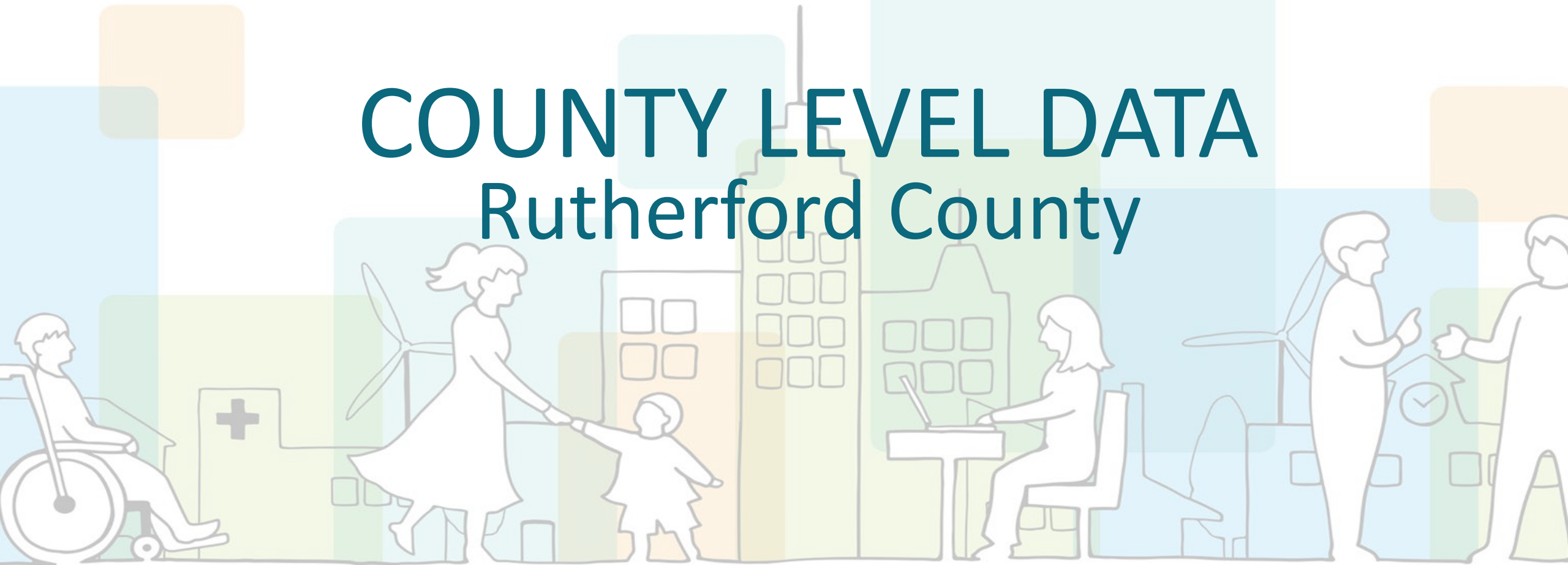


Community involvement and educational attainment among young adults are both at a 20-year high.



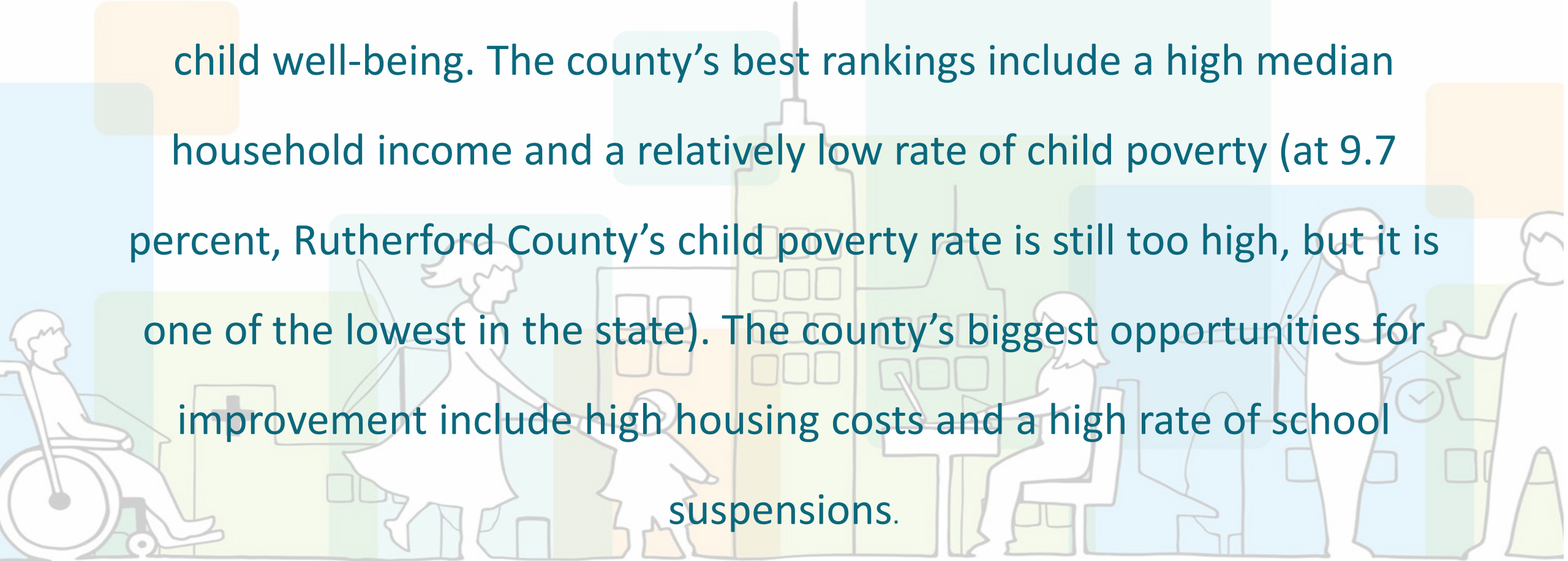
COUNTY LEVEL DATA

Rutherford County



COUNTY LEVEL DATA

At 4th, Rutherford County ranks among the top Tennessee counties in child well-being. The county's best rankings include a high median household income and a relatively low rate of child poverty (at 9.7 percent, Rutherford County's child poverty rate is still too high, but it is one of the lowest in the state). The county's biggest opportunities for improvement include high housing costs and a high rate of school suspensions.



DOMAINS



ECONOMIC WELL-
BEING



EDUCATION



FAMILY &
COMMUNITY



HEALTH



KEY INDICATORS



01

PERCENT OF CHILDREN LIVING IN POVERTY

2020 | U.S. Census Bureau, Small Area Income and Poverty Program

Families and persons are classified as living in poverty if their total family income or unrelated individual income was less than the poverty threshold specified for the applicable family size, age of householder and number of related children under age 18.

02

MEDIAN HOUSEHOLD INCOME

2020 | U.S. Census Bureau, Small Area Income and Poverty Estimates

The median household income in current U.S. dollar for a given year.

03

FAIR MARKET RENT

2020 | U.S. Office of Housing and Urban Development

This indicator provides estimates on fair market rent for a three-bedroom housing in a given fiscal year. Fair market rents represent the 40th percentile gross rent and determine the eligibility of rental housing units for the Section 8 Housing Assistance Payments program. State data is an average of county data.

01

PERCENT OF THIRD- TO EIGHTH-GRADE STUDENTS WHO SCORED AS “PROFICIENT” OR “ADVANCED” ON THE TNREADY READING AND LANGUAGE TEST

2020-21 | Tennessee Department of Education

State special schools are not included in county data. Using the valid tests the weighted average on scores were computed for counties with more than one school district.

02

PERCENT OF THIRD- TO EIGHTH-GRADE STUDENTS WHO SCORED AS “PROFICIENT” OR “ADVANCED” ON THE TNREADY MATH TEST

2020-21 | Tennessee Department of Education

State special schools are not included in county data. Using the valid tests the weighted average on scores were computed for counties with more than one school district.

03

PERCENT OF STUDENTS WHO GRADUATED FROM HIGH SCHOOL BASED ON THE NCLB FORMULA

2020-21 | Tennessee Department of Education

Number and percentage of students graduating within four years of entering high school, and graduation in more than four years for students with an Individual Education Plan. Graduation rate is based on NCLB formula.

01

PERCENT OF CHILDREN WHO LACK HEALTH INSURANCE

2019 | The Small Area Health Insurance Estimate (SAHIE) using the American Community Survey (ACS).

Model based estimated number and percent of uninsured children under age 19 at all income level.

02

PERCENT OF BABIES BORN AT LOW BIRTH WEIGHT

2020 | The Division of Population Health Assessment, Tennessee Department of Health.

Number of live born babies weighing less than 2,500 grams (5.5 pounds or 5 lbs., 8 oz.) in a given calendar year.

Rate is percent of total live births. *Figure is not displayed according to the Tennessee Department of Health guidelines for release of aggregate data to the public.

03

RATE (PER 100,000) OF CHILDREN AGES 1 TO 19 WHO DIED FROM ANY CAUSE

2019 | The Division of Population Health Assessment, Tennessee Department of Health.

01

RATE (PER 1,000) OF SUBSTANTIATED INSTANCES OF CHILD ABUSE OR NEGLECT

2020 | Tennessee Department of Children's Services, Tennessee Department of Health, Tennessee Commission on Children and Youth

Unduplicated counts of child abuse and neglect cases for which sufficient evidence exists. Rate is per 1,000 child population younger than age 18. Data are based on a calendar year. 2020 rate is based on 2019 population data

02

PERCENT OF BABIES BORN TO UNMARRIED FEMALES

2020 | Tennessee Department of Health

Number and percent of the live births to women who were not married in a given year.

03

PERCENT OF STUDENTS WHO WERE SUSPENDED AT LEAST ONCE DURING THE SCHOOL YEAR

2019-20 | Tennessee Department of Education

Number and percentage of students suspended (out of school) in a given school year. Rate is based on net enrollment (1st month membership).



CHILDREN LIVING IN POVERTY

2021

Percent
9.7%

Rank
3

2020

Percent
11.8%

Rank
4

TENNESSEE PERCENT: 18.4%



MEDIAN HOUSEHOLD INCOME

2021

Number
\$73,980

Rank
4

2020

Number
\$64,170

Rank
5

TENNESSEE MHI: \$56,962



FAIR MARKET RENT

2021

Number
\$1,484

Rank
86

2020

Number
\$1,327

Rank
86

TENNESSEE FMR: \$1,002



READING PROFICIENCY

2021

Percent
36.4%

Rank
10

2020

Number
38.8%

Rank
10

TENNESSEE PERCENT: 28.3%





MATH PROFICIENCY

2021

Percent
38.6%

Rank
10

2020

Number
49.1%

Rank
15

TENNESSEE PERCENT: 28.5%



HIGH SCHOOL GRADUATION

2021

Percent
95.1%

Rank
22

2020

Number
95.6%

Rank
23

TENNESSEE PERCENT: 88.7%



SUBSTANTIATED CASES OF ABUSE/NEGLECT

2021

Rate per 1,000

3.1

Rank

7

2020

Rate per 1,000

3.2

Rank

10

TENNESSEE RATE: 4.6 PER 1,000



BABIES BORN TO UNMARRIED FEMALES

2021

Percent

39.2%

Rank

18

TENNESSEE PERCENTAGE: 44.6%



SCHOOL SUSPENSIONS

2021

Percent
1.6%

Rank
53

2020

Number
3.6%

Rank
57

TENNESSEE PERCENTAGE: 3.6%



UNINSURED CHILDREN

2021

Percent
4.8%

Rank
30

2020

Percent
5.0%

Rank
35

TENNESSEE PERCENT: 4.9%



LOW BIRTHWEIGHT

2021

Percent
8.0%

Rank
31

2020

Number
9.4%

Rank
66

TENNESSEE PERCENT: 8.9%



CHILD & TEEN DEATHS

2021

Rate per 100,000
13

Rank
28

2020

Rate per 100,000
4.8

Rank
35

TENNESSEE RATE PER 100,00: 24.5



RECOMMENDATIONS

How can leaders, educators, service providers, policy makers and community members help?



Children in Poverty & Low Median Household Income

- Improving outreach to those who may qualify to receive SNAP, WIC and TennCare Nutrition programs that provide food for school-age children to take home can contribute to food security.
- Expanding services through Family Resource Centers.

How can leaders, educators, service providers, policy makers and community members help?



Fair Market Rent

- Pro-active housing policy that helps ensure affordable housing is available for people to live where they work can improve negative outcomes related to high housing costs.



How can leaders, educators, service providers, policy makers and community members help?



Reading & Math Proficiency

- Increasing/expanding access to pre-K can help reading and math proficiency in later grades.
- Early assessment of reading skills coupled with appropriate interventions
- Increasing STEM opportunities in elementary and middle schools

How can leaders, educators, service providers, policy makers and community members help?



High School Graduation Rate

- Making high school students aware of the community college and technical school benefits available to them through Tennessee Promise can encourage on-time high school graduation.

How can leaders, educators, service providers, policy makers and community members help?



Substantiated Cases of Abuse or Neglect

- Two-generation programs such as evidence-based home visiting have been shown to reduce instances of child abuse and neglect.

How can leaders, educators, service providers, policy makers and community members help?



Babies Born to Unmarried Females

- Comprehensive sex education classes that include both encouragement of abstinence and information on birth control have been shown to reduce the number of teen pregnancies.

How can leaders, educators, service providers, policy makers and community members help?



School Suspension Rate

- Suspension rates can be reduced through clear definitions of what constitutes suspendable behavior.
- A focus on restorative discipline practices that aim to improve behavior while keeping children in school.

How can leaders, educators, service providers, policy makers and community members help?



Uninsured Children

- Most uninsured children in Tennessee qualify for either TennCare or CoverKids
- Outreach to make sure that families are aware of these insurance opportunities.

How can leaders, educators, service providers, policy makers and community members help?



Low Birth Weight

- Low birth-weight is a persistent and difficult problem, but improvements can occur when care is made available for chronic physical and mental health and substance abuse conditions for women of childbearing age

How can leaders, educators, service providers, policy makers and community members help?



Child & Teen Death

- Consistent proper car seat and seat belt use, bicycle helmet use and life preserver use around water
- The fastest-growing cause of child and teen deaths in recent years has been homicide and suicide, often involving a firearm. Families who own firearms can reduce the risk to children and teens by following safe storage practices.

THANK YOU!



CONTACT

Kylie.Graves@tn.gov



COUNTY PROFILES

[TN.gov/TCCY/CountyProfiles](https://tn.gov/TCCY/CountyProfiles)

STATE OF THE CHILD

[TN.gov/TCCY/StateoftheChild](https://tn.gov/TCCY/StateoftheChild)



FIND MORE DATA

DataCenter.KidsCount.Org